

# HOTEL & SPA SLIPPERS



IDA  
HOSPITALITY  
Gate of perfection

**NEW PRODUCT**

COST SAVING OFFER WITH  
VARIOUS CHOICES

## CODE: ST ULT 023 Spunbond Closed Toe model, White Coloured



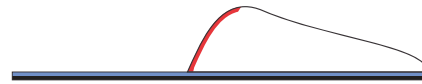
**Material** : Spunbond %100 recycable  
**Finish** : Designed with Ultrasonic forms  
**Model** : Closed Toe  
**Toe** : Laminated to spunbond 2 mm fiber and 20 gr/m<sup>2</sup> nonwoven and with piping at side.  
**Eva** : 3 mm  
**Base** : Spunbond laminated with 2 mm fiber.  
**Sizes available** : 28,5 / 29 / 29,5 / 30 cm  
**Packaging** : OPP  
**Quantity in Case** : 100  
**Case Dimension** : 40 x 60 x 30 cm



Eva Base



Silkscreen or Hot Transfer Print



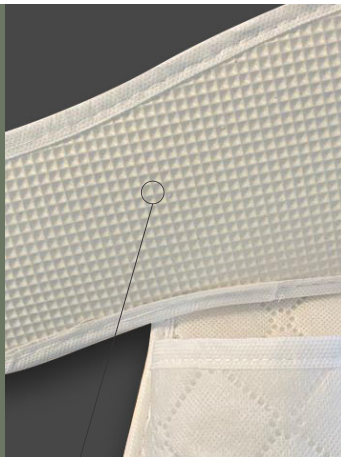
■ Laminated with 2 mm fiber  
■ Piping  
■ EVA sole 3 mm



## CODE: ST ULT BA 038 Spunbond Open Toe Model, White coloured



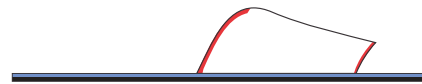
**Material** : Spunbond %100 recycable  
**Finish** : Designed with Ultrasonic forms  
**Model** : Open Toe  
**Toe** : Laminated to spunbond 2 mm fiber and 20 gr/m<sup>2</sup> nonwoven and with double piping at each side.  
**Eva** : 3 mm  
**Base** : Spunbond laminated with 2 mm fiber.  
**Sizes available** : 28,5 / 29 / 29,5 / 30 cm  
**Packaging** : OPP  
**Quantity in Case** : 100  
**Case Dimension** : 40 x 60 x 30 cm



Eva Base



Silkscreen or Hot Transfer Print



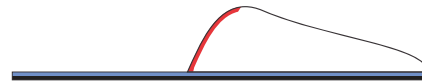
■ Laminated with 2 mm fiber  
■ Piping  
■ EVA sole 3 mm



# CODE: ST ULT BLACK 024 Spunbond Closed Toe model, Black Coloured



**Material** : Spunbond %100 recycable  
**Finish** : Designed with Ultrasonic forms  
**Model** : Closed Toe  
**Toe** : Laminated to spunbond 2 mm fiber and 20 gr/m<sup>2</sup> nonwoven and with piping at side.  
**Eva** : 3 mm  
**Base** : Spunbond laminated with 2 mm fiber.  
**Sizes available** : 28,5 / 29 / 29,5 / 30 cm  
**Packaging** : OPP  
**Quantity in Case** : 100  
**Case Dimension** : 40 x 60 x 30 cm



■ Laminated with 2 mm fiber  
■ Piping  
■ EVA sole 3 mm



Eva Base

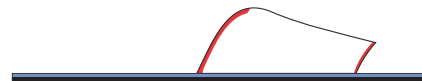
Silkscreen or Hot Transfer Print



# CODE: ST ULT BA BLACK 039 Spunbond Open Toe Model, Black coloured



**Material** : Spunbond %100 recycable  
**Finish** : Designed with Ultrasonic forms  
**Model** : Open Toe  
**Toe** : Laminated to spunbond 2 mm fiber and 20 gr/m<sup>2</sup> nonwoven and with double piping at each side.  
**Eva** : 3 mm  
**Base** : Spunbond laminated with 2 mm fiber.  
**Sizes available** : 28,5 / 29 / 29,5 / 30 cm  
**Packaging** : OPP  
**Quantity in Case** : 100  
**Case Dimension** : 40 x 60 x 30 cm



■ Laminated with 2 mm fiber  
■ Piping  
■ EVA sole 3 mm



Eva Base

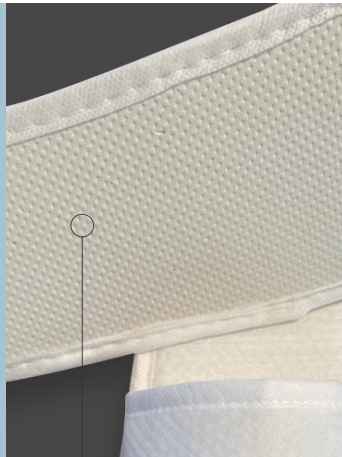
Silkscreen or Hot Transfer Print



**STANDARD MODELS**  
WITH SINGLE LAYER  
FRONT TOE

## CODE: ST PT O20 Honeycomb Pattern Slipper with Closed Toe

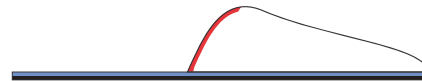
**Material** : Polyester 100 gr/m<sup>2</sup>  
**Finish** : Cloth itself designed with honeycomb forms  
**Model** : Closed Toe  
**Toe** : Honeycomb 100 gr/m<sup>2</sup> one layer + 2 mm sponge + 20 gr/m<sup>2</sup> nonwoven laminated with piping  
**Eva** : 3 mm  
**Base** : Honeycomb 100 gr/m<sup>2</sup> laminated with 3 mm sponge  
**Piping** : Nonwoven  
**Sizes available** : 28,5 / 29 / 29,5 / 30 cm  
**Packaging** : OPP  
**Quantity in Case** : 100  
**Case Dimension** : 40 x 60 x 30 cm



Eva Base



Silkscreen or Hot Transfer Print



■ Laminated with 2 mm fiber  
■ Piping  
■ EVA sole 3 mm



## CODE: ST PT BA O21 Honeycomb Pattern Slipper with Open Toe

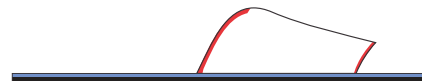
**Material** : Polyester 100 gr/m<sup>2</sup>  
**Finish** : Cloth itself designed with honeycomb forms  
**Model** : Open Toe  
**Toe** : Honeycomb 100 gr/m<sup>2</sup> one layer + 2 mm sponge + 20 gr/m<sup>2</sup> nonwoven laminated with double piping  
**Eva** : 3 mm  
**Base** : Honeycomb 100 gr/m<sup>2</sup> laminated with 3 mm sponge  
**Piping** : Nonwoven  
**Sizes available** : 28,5 / 29 / 29,5 / 30 cm  
**Packaging** : OPP  
**Quantity in Case** : 100  
**Case Dimension** : 40 x 60 x 30 cm



Eva Base



Silkscreen or Hot Transfer Print



■ Laminated with 2 mm fiber  
■ Piping  
■ EVA sole 3 mm

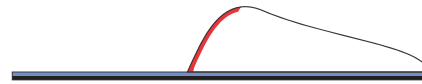


## CODE: ST MP 025 Micro Polyester Slipper with Closed Toe

**Material** : Micropolyester 110 gr/m<sup>2</sup>  
**Model** : Closed Toe  
**Toe** : Micropolyester one layer 110 gr/m<sup>2</sup>  
 + 3 mm sponge + 20 gr/m<sup>2</sup>  
 nonwoven laminated with piping  
**Eva** : 3 mm  
**Base** : Micropolyester 110 gr/m<sup>2</sup>  
 + 3 mm sponge laminated  
**Piping** : Nonwoven  
**Sizes available** : 28,5 / 29 / 29,5 / 30 cm  
**Packaging** : OPP  
**Quantity in Case** : 100  
**Case Dimension** : 40 x 60 x 30 cm



Eva Base



■ Laminated with 2 mm fiber  
■ Piping  
■ EVA sole 3 mm

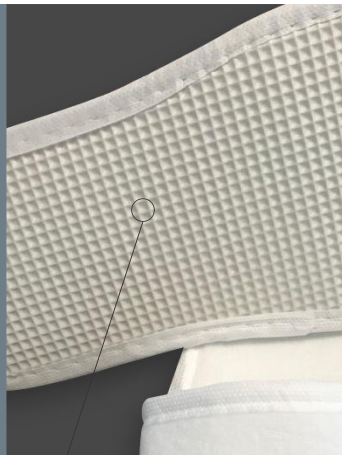


Silkscreen or Hot Transfer Print

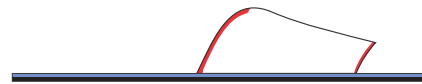


## CODE: ST MP BA 030 Micro Polyester Slipper with Open Toe

**Material** : Micropolyester 110 gr/m<sup>2</sup>  
**Model** : Open Toe  
**Toe** : Micropolyester 110 gr/m<sup>2</sup> one layer  
 + 3 mm sponge + 20 gr/m<sup>2</sup>  
 nonwoven laminated with double  
 piping  
**Eva** : 3 mm  
**Base** : Micropolyester 110 gr/m<sup>2</sup>  
 laminated with 3 mm sponge  
**Piping** : Nonwoven  
**Sizes available** : 28,5 / 29 / 29,5 / 30 cm  
**Packaging** : OPP  
**Quantity in Case** : 100  
**Case Dimension** : 40 x 60 x 30 cm



Eva Base



■ Laminated with 2 mm fiber  
■ Piping  
■ EVA sole 3 mm

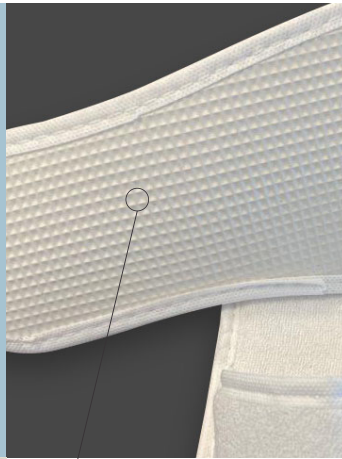


Silkscreen or Hot Transfer Print



## CODE: ST HT 035 Terry Cotton Slipper with Closed Toe

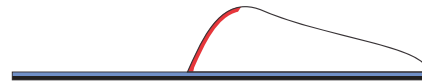
Material : Terry Cotton 140 gr/m<sup>2</sup>  
 (% 80 cotton % 20 polyester)  
 Model : Closed Toe  
 Toe : Terry Cotton 140 gr/m<sup>2</sup> one layer  
 + 3 mm sponge + 20 gr/m<sup>2</sup>  
 nonwoven laminated with piping  
 Eva : 3 mm  
 Base : Terry Cotton 140 gr/m<sup>2</sup>  
 + 3 mm sponge laminated  
 Piping : Nonwoven  
 Sizes available : 28,5 / 29 / 29,5 / 30 cm  
 Packaging : OPP  
 Quantity in Case : 100  
 Case Dimension : 40 x 60 x 30 cm



Eva Base



Silkscreen or Hot Transfer Print

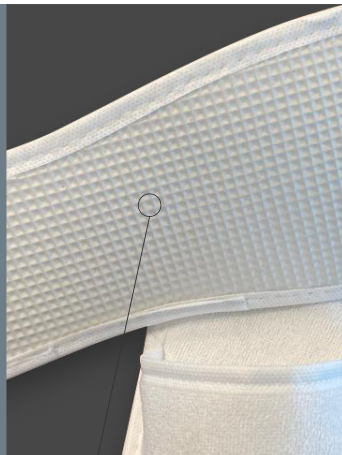


■ Laminated with 2 mm fiber  
 ■ Piping  
 ■ EVA sole 3 mm



## CODE: ST HT BA 036 Terry Cotton Slipper with Open Toe

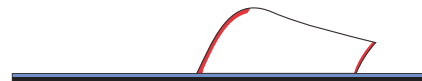
Material : Terry Cotton 140 gr/m<sup>2</sup>  
 (% 80 cotton % 20 polyester)  
 Model : Open Toe  
 Toe : Terry Cotton 140 gr/m<sup>2</sup> two layers  
 + 3 mm sponge + 20 gr/m<sup>2</sup>  
 nonwoven laminated with double  
 piping  
 Eva : 3 mm  
 Base : Terry Cotton 140 gr/m<sup>2</sup>  
 laminated with 3 mm sponge  
 Piping : Nonwoven  
 Sizes available : 28,5 / 29 / 29,5 / 30 cm  
 Packaging : OPP  
 Quantity in Case : 100  
 Case Dimension : 40 x 60 x 30 cm



Eva Base



Silkscreen or Hot Transfer Print



■ Laminated with 2 mm fiber  
 ■ Piping  
 ■ EVA sole 4 mm

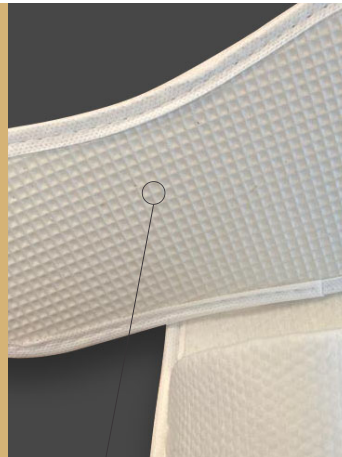




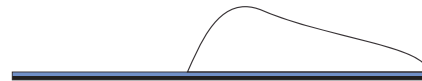
**LUXURY MODELS**  
WITH DOUBLE LAYER  
FRONT TOE

## CODE: DP PT O39 Honeycomb Pattern Slipper Closed Toe with Double Layer

**Material** : Honeycomb 100 gr/m<sup>2</sup>  
**Finish** : Clothed itself designed with honeycomb forms  
**Model** : Closed Toe  
**Toe** : Honeycomb 100 gr/m<sup>2</sup> double layer + 3 mm + 3 mm = 6 mm sponge  
**Eva** : 4 mm  
**Base** : Honeycomb 100 gr/m<sup>2</sup>, laminated with 3 mm sponge  
**Piping** : Nonwoven  
**Sizes available** : 28,5 / 29 / 29,5 / 30 cm  
**Packaging** : OPP  
**Quantity in Case** : 100  
**Case Dimension** : 40 x 60 x 40 cm



Eva Base



■ Laminated with 2 mm fiber  
■ EVA sole 4 mm

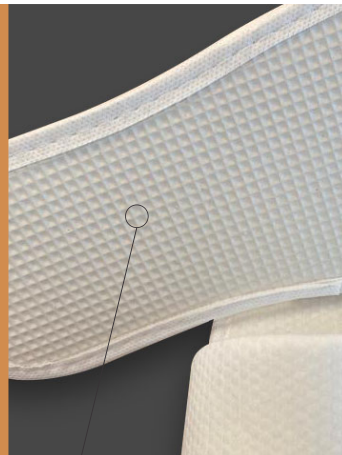


Silkscreen or Hot Transfer Print

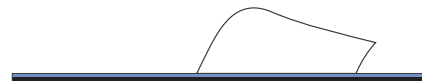


## CODE: DP PT BA O49 Honeycomb Pattern Slipper Open Toe with Double Layer

**Material** : Honeycomb 100 gr/m<sup>2</sup>  
**Finish** : Clothed itself designed with honeycomb forms  
**Model** : Open Toe  
**Toe** : Honeycomb 100 gr/m<sup>2</sup> double layer + 3 mm + 3 mm = 6 mm sponge  
**Eva** : 4 mm  
**Base** : Honeycomb 100 gr/m<sup>2</sup>, laminated with 3 mm sponge  
**Piping** : Nonwoven  
**Sizes available** : 28,5 / 29 / 29,5 / 30 cm  
**Packaging** : OPP  
**Quantity in Case** : 100  
**Case Dimension** : 40 x 60 x 40 cm



Eva Base



■ Laminated with 2 mm fiber  
■ EVA sole 4 mm

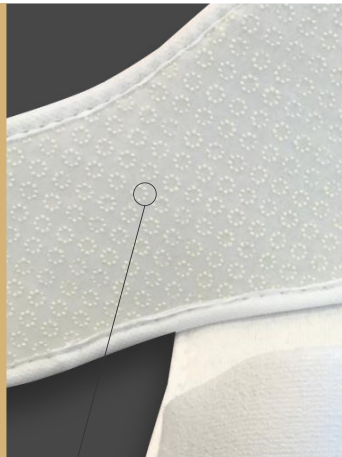


Silkscreen or Hot Transfer Print

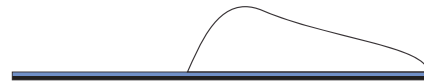


## CODE: DP MP O40 Micropolyester Slipper Closed Toe with Double Layer

**Material** : Micropolyester 110 gr/m<sup>2</sup>  
**Model** : Closed Toe  
**Toe** : Micropolyester 110 gr/m<sup>2</sup> double layer with 3 mm + 3 mm = 6 mm sponge laminated  
**Eva** : 4 mm  
**Base** : Micropolyester 110 gr/m<sup>2</sup> laminated with 3 mm sponge  
**Piping** : Nonwoven  
**Sizes available** : 28,5 / 29 / 29,5 / 30 cm  
**Packaging** : OPP  
**Quantity in Case** : 100  
**Case Dimension** : 40 x 60 x 40 cm



Eva Base



■ Laminated with 2 mm fiber  
■ EVA sole 4 mm

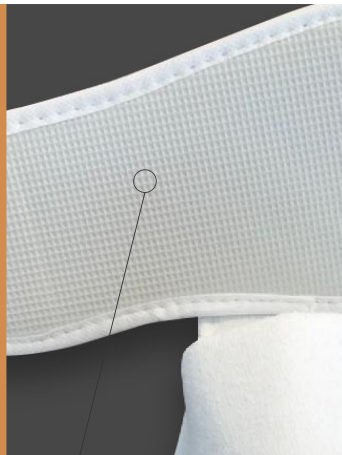


Silkscreen or Hot Transfer Print

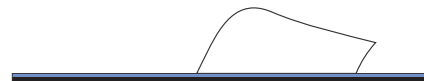


## CODE: DP MP BA O41 Micropolyester Slipper Open Toe with Double Layer

**Material** : Micropolyester 110 gr/m<sup>2</sup>  
**Model** : Open Toe  
**Toe** : Micropolyester 110 gr/m<sup>2</sup> double layer with 3 mm + 3 mm = 6 mm sponge laminated  
**Eva** : 4 mm  
**Base** : Micropolyester 110 gr/m<sup>2</sup> laminated with 3 mm sponge  
**Piping** : Nonwoven  
**Sizes available** : 28,5 / 29 / 29,5 / 30 cm  
**Packaging** : OPP  
**Quantity in Case** : 100  
**Case Dimension** : 40 x 60 x 40 cm



Eva Base



■ Laminated with 2 mm fiber  
■ EVA sole 4 mm

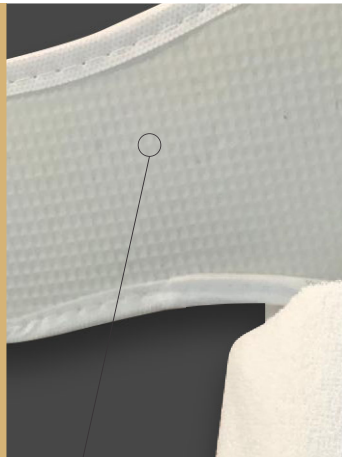


Silkscreen or Hot Transfer Print

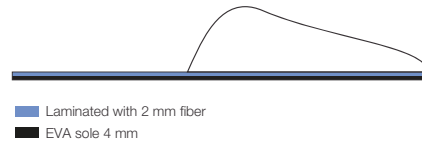


## CODE: DP HT 050 Terry Cotton Slipper Closed Toe with Double Layer

Material : Terry Cotton 140 gr/m<sup>2</sup>  
 ( % 80 Cotton + % 20 Polyester )  
 Model : Closed Toe  
 Toe : Terry Cotton 140 gr/m<sup>2</sup> with double  
 layer + 3 mm + 3 mm = 6 mm  
 sponge laminated  
 Eva : 4 mm  
 Base : Terry Cotton 140 gr/m<sup>2</sup>  
 laminated with 3 mm sponge  
 Piping : Nonwoven  
 Sizes available : 28,5 / 29 / 29,5 / 30 cm  
 Packaging : OPP  
 Quantity in Case : 100 pairs  
 Case Dimension : 40 x 60 x 40 cm



Eva Base

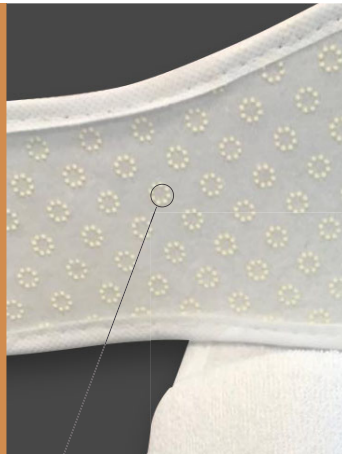


Silkscreen or Hot Transfer Print

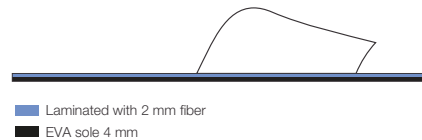


## CODE: DP HT BA 055 Terry Cotton Slipper Open Toe with Double Layer

Material : Terry Cotton 140 gr/m<sup>2</sup>  
 ( % 80 Cotton + % 20 Polyester )  
 Model : Open Toe  
 Toe : Terry Cotton 140 gr/m<sup>2</sup> with double  
 layer + 3 mm + 3 mm = 6 mm  
 sponge laminated  
 Eva : 4 mm  
 Base : Terry Cotton 140 gr/m<sup>2</sup>  
 laminated with 3 mm sponge  
 Piping : Nonwoven  
 Sizes available : 28,5 / 29 / 29,5 / 30 cm  
 Packaging : OPP  
 Quantity in Case : 100 pairs  
 Case Dimension : 40 x 60 x 40 cm



Eva Base



Silkscreen or Hot Transfer Print



## CODE: DP HT 055 Terry Cotton Slipper Closed Toe with Double Layer with cardboard

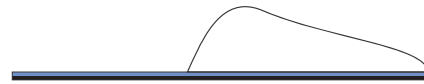
**Material** : Terry Cotton 140 gr/m<sup>2</sup>  
( % 80 Cotton + % 20 Polyester )  
**Model** : Closed Toe  
**Toe** : Terry Cotton 140 gr/m<sup>2</sup> with double  
layer + 3 mm + 3 mm = 6 mm  
sponge laminated  
**Eva** : 4 mm  
**Base** : Terry Cotton 140 gr/m<sup>2</sup>  
laminated with 3 mm sponge  
**Piping** : Nonwoven  
**Sizes available** : 28,5 / 29 / 29,5 / 30 cm  
**Packaging** : Recycled cardboard 200 gr/m<sup>2</sup>  
**Quantity in Case** : 100 pairs  
**Case Dimension** : 40 x 60 x 40 cm



Offset Print available  
with additional cost



Silkscreen or Hot Transfer Print



■ Laminated with 2 mm fiber  
■ EVA sole 4 mm



## CODE: DP HT BA 060 Terry Cotton Slipper Open Toe with Double Layer with cardboard

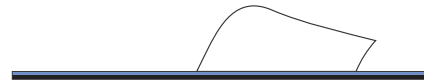
**Material** : Terry Cotton 140 gr/m<sup>2</sup>  
( % 80 Cotton + % 20 Polyester )  
**Model** : Open Toe  
**Toe** : Terry Cotton 140 gr/m<sup>2</sup> with double  
layer + 3 mm + 3 mm = 6 mm  
sponge laminated  
**Eva** : 4 mm  
**Base** : Terry Cotton 140 gr/m<sup>2</sup>  
laminated with 3 mm sponge  
**Piping** : Nonwoven  
**Sizes available** : 28,5 / 29 / 29,5 / 30 cm  
**Packaging** : Recycled cardboard 200 gr/m<sup>2</sup>  
**Quantity in Case** : 100 pairs  
**Case Dimension** : 40 x 60 x 40 cm



Offset Print available  
with additional cost



Silkscreen or Hot Transfer Print



■ Laminated with 2 mm fiber  
■ EVA sole 4 mm

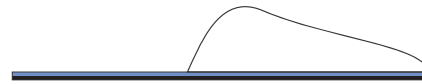


## CODE: DP ŞP 045 Polar Slipper Closed Toe with Double Layer

Material : Raised Micropolyester 140 gr/m<sup>2</sup>  
 (% 100 Polyester )  
 Model : Closed Toe  
 Toe : Micropolyester 140 gr/m<sup>2</sup> with double  
 layer + 3 mm + 3 mm = 6 mm  
 sponge laminated  
 Eva : 4 mm  
 Base : Raised Micro polyester 140 gr/m<sup>2</sup>  
 laminated with 3 mm sponge  
 Piping : Nonwoven  
 Sizes available : 28,5 / 29 / 29,5 / 30 cm  
 Packaging : OPP  
 Quantity in Case : 100 pairs  
 Case Dimension : 40 x 60 x 40 cm



Eva Base



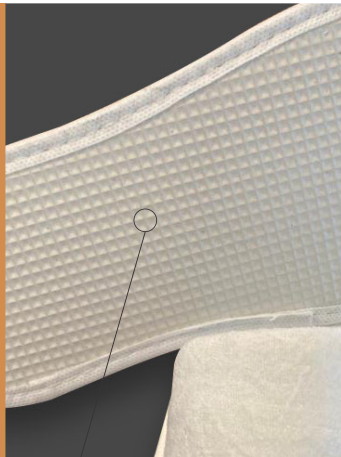
■ Laminated with 2 mm fiber  
 ■ EVA sole 4 mm



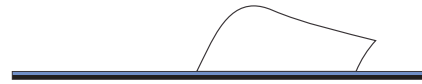
Silkscreen or Hot Transfer Print

## CODE: DP ŞP BA 046 Polar Slipper Open Toe with Double Layer

Material : Raised Micropolyester 140 gr/m<sup>2</sup>  
 (% 100 Polyester )  
 Model : Open Toe  
 Toe : Micropolyester 140 gr/m<sup>2</sup> with double  
 layer + 3 mm + 3 mm = 6 mm  
 sponge laminated  
 Eva : 4 mm  
 Base : Raised Micro polyester 140 gr/m<sup>2</sup>  
 laminated with 3 mm sponge  
 Piping : Nonwoven  
 Sizes available : 28,5 / 29 / 29,5 / 30 cm  
 Packaging : OPP  
 Quantity in Case : 100 pairs  
 Case Dimension : 40 x 60 x 40 cm



Eva Base



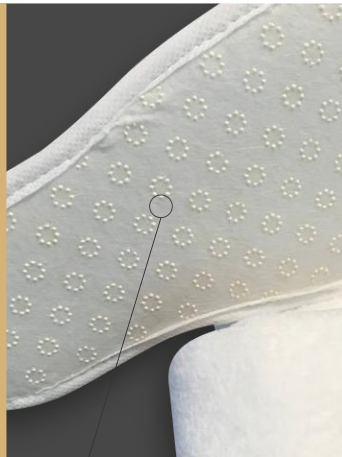
■ Laminated with 2 mm fiber  
 ■ EVA sole 4 mm



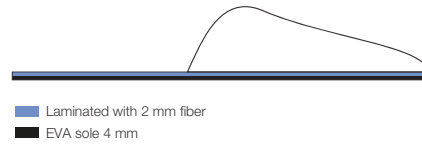
Silkscreen or Hot Transfer Print

## CODE: DP WT 102 Wellsoft Slipper Closed Toe with Double Layer

**Material** : Wellsoft 165 gr/m<sup>2</sup>  
 ( % 60 Cotton + % 40 Polyester )  
**Model** : Closed Toe  
**Toe** : Wellsoft 165 gr/m<sup>2</sup> with double layer  
 + 3 mm + 3 mm = 6 mm  
 sponge laminated  
**Eva** : 4 mm  
**Base** : Wellsoft 165 gr/m<sup>2</sup>  
 laminated with 3 mm sponge  
**Piping** : Nonwoven  
**Sizes available** : 28,5 / 29 / 29,5 / 30 cm  
**Packaging** : OPP  
**Quantity in Case** : 100 pairs  
**Case Dimension** : 40 x 60 x 40 cm



Eva Base



■ Laminated with 2 mm fiber  
■ EVA sole 4 mm

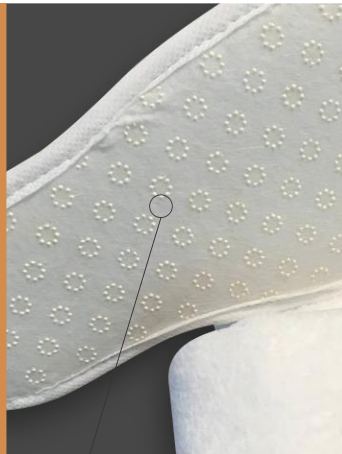


Only Embroidery

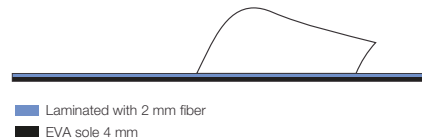


## CODE: DP WT BA 103 Wellsoft Slipper Open Toe with Double Layer

**Material** : Wellsoft 165 gr/m<sup>2</sup>  
 ( % 60 Cotton + % 40 Polyester )  
**Model** : Open Toe  
**Toe** : Wellsoft 165 gr/m<sup>2</sup> with double layer  
 + 3 mm + 3 mm = 6 mm  
 sponge laminated  
**Eva** : 4 mm  
**Base** : Wellsoft 165 gr/m<sup>2</sup>  
 laminated with 3 mm sponge  
**Piping** : Nonwoven  
**Sizes available** : 28,5 / 29 / 29,5 / 30 cm  
**Packaging** : OPP  
**Quantity in Case** : 100 pairs  
**Case Dimension** : 40 x 60 x 40 cm



Eva Base



■ Laminated with 2 mm fiber  
■ EVA sole 4 mm

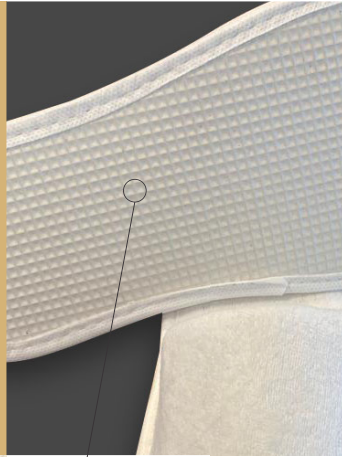


Only Embroidery

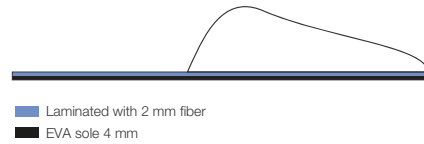


## CODE: DP KT 300 Cotton Velvet Slipper Closed Toe with Double Layer

Material : Cotton Velvet 140 gr/m<sup>2</sup>  
 (% 100 Cotton )  
 Model : Closed Toe  
 Toe : Cotton Velvet 140 gr/m<sup>2</sup> with double  
 layer + 3 mm + 3 mm = 6 mm  
 sponge laminated  
 Eva : 4 mm  
 Base : Cotton Velvet 140 gr/m<sup>2</sup>  
 laminated with 3 mm sponge  
 Piping : Nonwoven  
 Sizes available : 28,5 / 29 / 29,5 / 30 cm  
 Packaging : OPP  
 Quantity in Case : 100 pairs  
 Case Dimension : 40 x 60 x 40 cm



Eva Base



Silkscreen or Hot Transfer Print

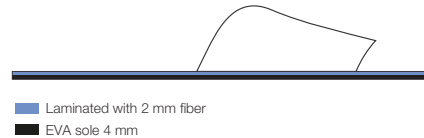


## CODE: DP KT BA 301 Cotton Velvet Slipper Open Toe with Double Layer

Material : Cotton Velvet 140 gr/m<sup>2</sup>  
 (% 60 cotton + % 40 polyester )  
 Model : Open Toe  
 Toe : Cotton Velvet 140 gr/m<sup>2</sup> with double  
 layer + 3 mm + 3 mm = 6 mm  
 sponge laminated  
 Eva : 4 mm  
 Base : Cotton Velvet 140 gr/m<sup>2</sup>  
 laminated with 3 mm sponge  
 Piping : Nonwoven  
 Sizes available : 28,5 / 29 / 29,5 / 30 cm  
 Packaging : OPP  
 Quantity in Case : 100 pairs  
 Case Dimension : 40 x 60 x 40 cm



Eva Base



Silkscreen or Hot Transfer Print



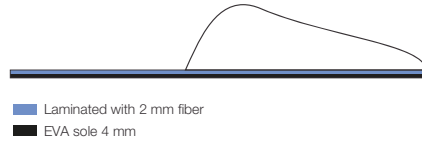


**CHOICES**

WITH DOUBLE LAYER  
EVA SOLE

## CODE: DP HT ÇT 500 Terry Cotton Slipper Closed Toe with Double Layer

**Material** : Terry Cotton 140 gr/m<sup>2</sup>  
( % 80 cotton + % 20 Polyester )  
**Model** : Closed Toe  
**Toe** : Terry Cotton 140 gr/m<sup>2</sup> with double layer  
+ 3 mm + 3 mm = 6 mm sponge  
**Eva** : 3 mm + 4 mm Double Eva at base  
**Base** : Terry Cotton 140 gr/m<sup>2</sup>  
laminated with 3 mm sponge  
**Piping** : Nonwoven  
**Sizes available** : 28,5 / 29 / 29,5 / 30 cm  
**Packaging** : OPP  
**Quantity in Case** : 100 pairs  
**Case Dimension** : 40 x 60 x 40 cm



■ Laminated with 2 mm fiber  
■ EVA sole 4 mm



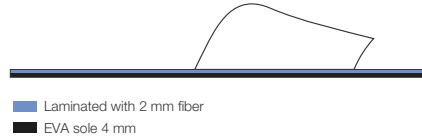
Silkscreen or Hot Transfer Print

Double Eva Base



## CODE: DP HT BA ÇT 510 Terry Cotton Slipper Open Toe with Double Layer

**Material** : Terry Cotton 140 gr/m<sup>2</sup>  
( % 80 cotton + % 20 Polyester )  
**Model** : Open Toe  
**Toe** : Terry Cotton 140 gr/m<sup>2</sup> with  
two layers laminated with  
3 mm+ 3 mm = 6 mm sponge  
**Eva** : 3 mm + 4 mm Double Eva at base  
**Base** : Terry Cotton 140 gr/m<sup>2</sup>  
laminated with 3 mm sponge  
**Piping** : Nonwoven  
**Sizes available** : 28,5 / 29 / 29,5 / 30 cm  
**Packaging** : OPP  
**Quantity in Case** : 100 pairs  
**Case Dimension** : 40 x 60 x 40 cm



■ Laminated with 2 mm fiber  
■ EVA sole 4 mm



Silkscreen or Hot Transfer Print

Double Eva Base



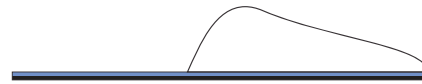
# **VARIOUS LUXURY SLIPPERS**

## CODE: DP LUX 550 Maternity Slippers

**Material** : Fleece Velvet 165 gr/m<sup>2</sup>  
**Model** : Closed Toe  
**Toe** : Fleece Velvet 165 gr/m<sup>2</sup> double layer with 3 mm + 3 mm = 6 mm sponge laminated.  
**Eva** : 3 mm antislip base  
**Base** : Fleece Velvet 165 gr/m<sup>2</sup> laminated with 20 mm sponge  
**Piping** : 70 gr/m<sup>2</sup> Nonwoven  
**Sizes available** : 28,5 / 29 / 29,5 / 30 cm  
**Packaging** : OPP  
**Quantity in Case** : 50 pairs  
**Case Dimension** : 40 x 60 x 40 cm



Eva Base



■ Laminated with 65 gr/m<sup>2</sup> Nonwoven  
■ EVA sole 3 mm



Silkscreen or Hot Transfer Print

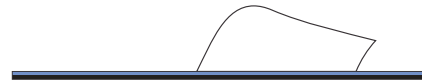


## CODE: DP PK BA 0123 Cotton Pique Slipper Open Toe with Double Front layer

**Material** : Pique 225 gr/m<sup>2</sup>  
**Model** : Open Toe  
**Toe** : Pique 225 gr/m<sup>2</sup> with double layer with 3 mm + 3 mm = 6 mm sponge laminated.  
**Eva** : 4 mm  
**Base** : Pique 225 gr/m<sup>2</sup> laminated with 3 mm sponge  
**Piping** : Nonwoven  
**Sizes available** : 28,5 / 29 / 29,5 / 30 cm  
**Packaging** : OPP  
**Quantity in Case** : 100 pairs  
**Case Dimension** : 40 x 60 x 40 cm



Eva Base



■ Laminated with 2 mm fiber  
■ EVA sole 4 mm



Only Embroidery



## CODE: LX PA 333 Luxury Flip Flops Slipper with Double Base

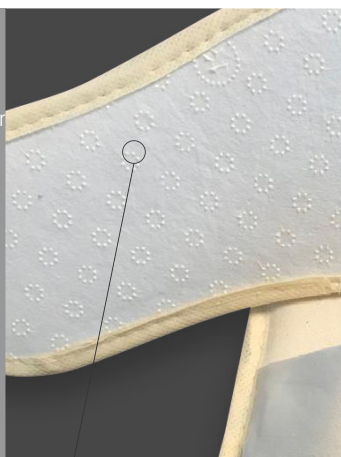
Material : Wellsoft 165 gr/m<sup>2</sup>  
Model : Flip Flops  
Toe : Wellsoft 165 gr/m<sup>2</sup> with 2 mm sponge  
Eva : Double base with 2 mm + 3 mm  
Base : Wellsoft 165 gr/m<sup>2</sup> with 3 mm sponge laminated  
Piping : Nonwoven  
Sizes available : 28,5 / 29 / 29,5 / 30 cm  
Packaging : OPP  
Quantity in Case : 100 pairs  
Case Dimension : 40 x 60 x 40 cm



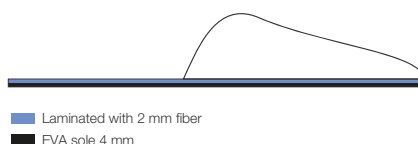
**OTHER CHOICES**

## CODE: KDP HKT 0222 Closed Toe with Double Layer

Material : Terry Cotton 140 gr/m<sup>2</sup>  
 ( % 80 cotton + % 20 Polyester )  
 Model : Closed Toe  
 Toe : Terry Cotton 140 gr/m<sup>2</sup> with double layer  
 + 3 mm +3 mm = 6 mm sponge  
 laminated  
 Eva : 4 mm  
 Base : Terry Cotton 140 gr/m<sup>2</sup>  
 laminated with 3 mm sponge  
 Piping : Nonwoven  
 Sizes available : 28,5 / 29 / 29,5 / 30 cm  
 Packaging : OPP  
 Quantity in Case : 100 pairs  
 Case Dimension : 40 x 60 x 40 cm



Eva Base

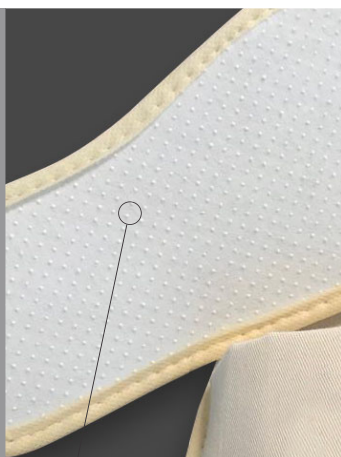


Silkscreen or Hot Transfer Print

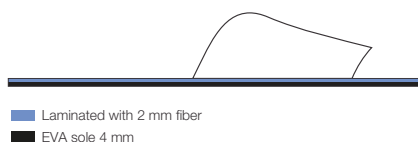


## CODE: DP HKT BA 0223 Open Toe with Double Layer

Material : Terry Cotton 140 gr/m<sup>2</sup>  
 ( % 80 cotton + % 20 Polyester )  
 Model : Open Toe  
 Toe : Terry Cotton 140 gr/m<sup>2</sup> with  
 two layers laminated with  
 3 mm+ 3 mm = 6 mm sponge  
 Eva : 4 mm  
 Base : Terry Cotton 140 gr/m<sup>2</sup>  
 laminated with 3 mm sponge  
 Piping : Nonwoven  
 Sizes available : 28,5 / 29 / 29,5 / 30 cm  
 Packaging : OPP  
 Quantity in Case : 100 pairs  
 Case Dimension : 40 x 60 x 40 cm



Eva Base



Silkscreen or Hot Transfer Print



# CHILDREN SLIPPERS



# Children Slippers



## CODE: DP ÇT 0255

**Used Material** : Wellsoft 385 gr/m<sup>2</sup>  
**Model** : Closed Toe  
**Toe** : Wellsoft 385 gr/m<sup>2</sup> with double layer  
+ 3 mm + 3 mm = 6 mm  
sponge laminated  
**Eva** : 4 mm with antislip finish  
**Base** : Wellsoft 385 gr/m<sup>2</sup>  
laminated with 3 mm  
sponge  
**Piping** : Nonwoven  
**Sizes available** : 25,5 cm  
**Case Dimensions** : 40 x 60 x 30 cm

## CODE: DP ÇT 023

**Used Material** : Terry Cotton 140 gr/m<sup>2</sup>  
**Model** : Closed Toe  
**Toe** : Terry Cotton 140 gr/m<sup>2</sup>  
with double layer  
+ 3 mm + 3 mm = 6 mm  
sponge laminated  
**Eva** : 4 mm with antislip finish  
**Base** : Terry Cotton 140 gr/m<sup>2</sup>  
laminated with 3 mm  
sponge  
**Piping** : Nonwoven  
**Sizes available** : 23 cm  
**Case Dimensions** : 40 x 60 x 30 cm

## CODE: DP ÇT 0195

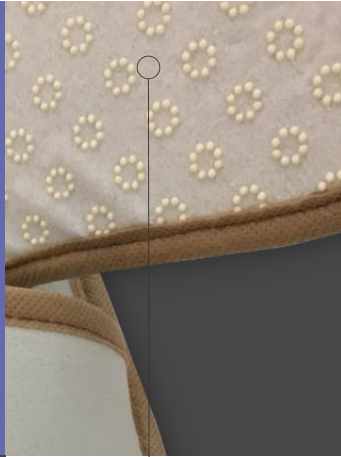
**Used Material** : Cotton Velvet 140 gr/m<sup>2</sup>  
**Model** : Closed Toe  
**Toe** : Cotton Velvet 140 gr/m<sup>2</sup>  
with double layer  
+ 3 mm + 3 mm = 6 mm  
sponge laminated  
**Eva** : 4 mm with antislip finish  
**Base** : Cotton Velvet 140 gr/m<sup>2</sup>  
laminated with 3 mm  
sponge  
**Piping** : Nonwoven  
**Sizes available** : 19,5 cm  
**Case Dimensions** : 40 x 60 x 30 cm

All kinds of models will be available with sizes as; 19,5 / 23 / 25,5 cm with any of the models and specs.

**SPA SLIPPERS**

## CODE: SPA 601 Eva SPA Slipper Closed Toe

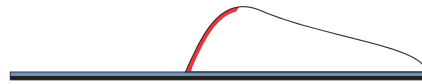
Model : Closed Toe  
Toe : 2 mm Eva with piping  
Eva : 3 mm with laminated antislip base  
Piping : Nonwoven  
Sizes available : 28,5 / 29 / 29,5 / 30 cm  
Packaging : OPP  
Quantity in Case : 100 pairs  
Case Dimension : 40 x 60 x 40 cm



Eva Base



Silkscreen or Hot Transfer Print

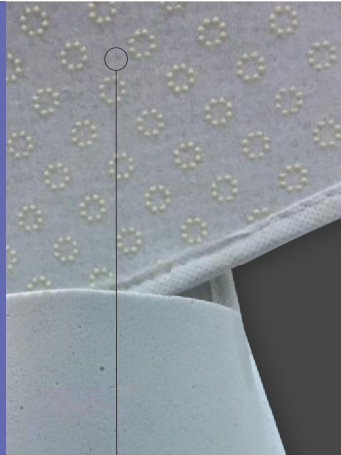


■ Laminated with 2 mm fiber  
■ Piping  
■ EVA sole 3 mm



## CODE: SPA BA 600 Eva SPA Slipper Open Toe

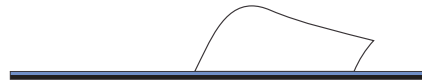
Model : Open Toe  
Toe : 2 mm Eva  
Eva : 3 mm with laminated antislip base  
Piping : Nonwoven  
Sizes available : 28,5 / 29 / 29,5 / 30 cm  
Packaging : OPP  
Quantity in Case : 100 pairs  
Case Dimension : 40 x 60 x 40 cm



Antislip



Silkscreen or Hot Transfer Print



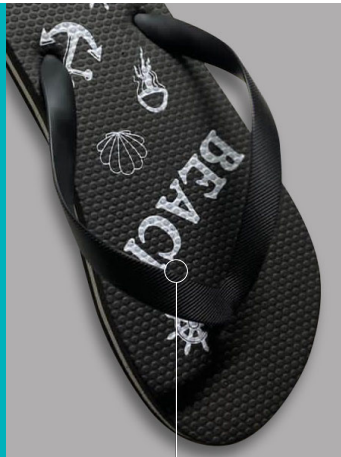
■ Laminated with 2 mm fiber  
■ EVA sole 4 mm



**BEACH  
FLIP FLOPS SLIPPERS**

# CODE: PT FF 123 Beach Flip Flops Slipper

Material : Eva  
Model : Flip Flops  
Standard Colors : Black, white  
Base : Eva 15 mm  
Sizes available : Men and Woman sizes to be defined on request  
Print : MOQ 2.000 pairs  
Packaging : OPP  
Quantity in Case : 50 pairs  
Case Dimension : 40 x 60 x 40 cm



Different print choices



Color choices

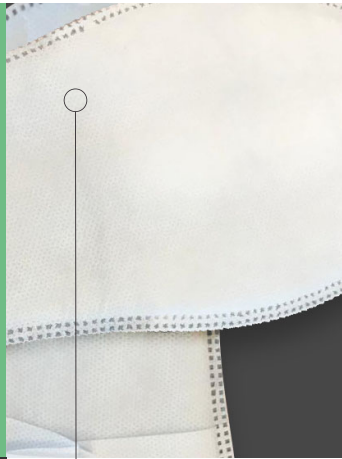


# **NONWOVEN SLIPPERS**

## CODE: ST TT 010 Nonwoven Slipper with Ultrasonic Sewing

**NEW**  
100% ECO  
FRIENDLY

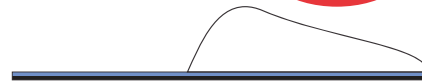
**Material** : 70 gr/m<sup>2</sup> nonwoven laminated with XP  
**Model** : Closed Toe  
**Toe** : 70 gr/m<sup>2</sup>  
**Base** : 70 gr/m<sup>2</sup> + XP + 70 gr/m<sup>2</sup> ( used instead of Eva sole )  
**Sizes available** : 29 cm  
**Packaging** : OPP  
**Quantity in Case** : 300 pairs  
**Case Dimension** : 40 x 60 x 40 cm



Eva Base



Silkscreen Print



- Laminated with 70 gr/m<sup>2</sup> Nonwoven
- 70 gr/m<sup>2</sup> + XP ( used instead of Eva sole )



## CODE: ST TT 015 Nonwoven Slipper with Standard Sewing

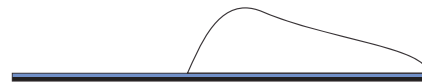
**Material** : 65 gr/m<sup>2</sup> Nonwoven  
**Model** : Closed Toe  
**Toe** : 65 gr/m<sup>2</sup> Nonwoven  
**Eva** : 3 mm  
**Base** : Laminated with 65 gr/m<sup>2</sup> Nonwoven  
**Sizes available** : 29 cm  
**Packaging** : OPP  
**Quantity in Case** : 250 pairs  
**Case Dimension** : 40 x 60 x 40 cm



Eva Base



Silkscreen or Hot Transfer Print

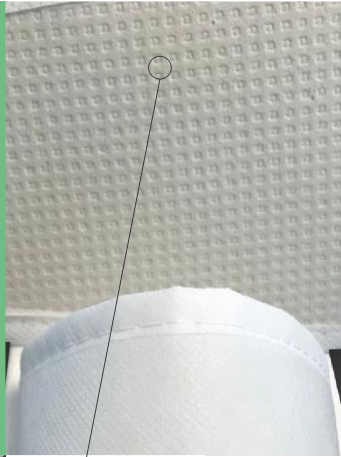


- Laminated with 65 gr/m<sup>2</sup> Nonwoven
- EVA sole 3 mm



# CODE: ST LX 020 Luxury Nonwoven Slipper

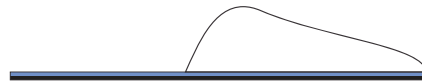
Material : 65 gr/m<sup>2</sup> Nonwoven  
Model : Closed Toe  
Toe : 65 gr/m<sup>2</sup> Nonwoven  
+ 2 mm sponge + 20 gr/m<sup>2</sup>  
Nonwoven laminated  
Eva : 3 mm  
Base : Laminated with 70 gr/m<sup>2</sup>  
Nonwoven  
Sizes available : 29 cm  
Packaging : OPP  
Quantity in Case : 100 pairs  
Case Dimension : 40 x 60 x 40 cm



Eva Base



Silkscreen or Hot Transfer Print



■ Laminated with 65 gr/m<sup>2</sup> Nonwoven  
■ EVA sole 3 mm





**DIGITAL PRINTED  
NONWOVEN SLIPPERS**

## CODE: ST DJ 033-1 Digital Printed Nonwoven Slipper

**Material** : Digital printed nonwoven 65 gr/m<sup>2</sup>  
**Model** : Closed Toe  
**Toe** : 65 gr/m<sup>2</sup> nonwoven laminated with 2 mm sponge +15 gr/m<sup>2</sup> nonwoven  
**Base** : 65 gr/m<sup>2</sup> nonwoven laminated with 3 mm sponge  
**Eva** : 3 mm  
**Sizes available** : 29 cm  
**Packaging** : OPP  
**Quantity in Case** : 100 pairs  
**Case Dimension** : 40 x 60 x 30

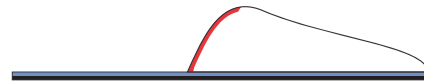
*MOQ 10.000 pairs / Can also be personalized with Logo and requested print details.*



Eva Base



Digital Print



■ Laminated with 65 gr/m<sup>2</sup> nonwoven  
■ Piping  
■ 3 mm Eva



## CODE: ST DJ 033-2 Digital Printed Nonwoven Slipper

**Material** : Digital printed nonwoven 65 gr/m<sup>2</sup>  
**Model** : Closed Toe  
**Toe** : 65 gr/m<sup>2</sup> nonwoven laminated with 2 mm sponge +15 gr/m<sup>2</sup> nonwoven  
**Base** : 65 gr/m<sup>2</sup> nonwoven laminated with 3 mm sponge  
**Eva** : 3 mm  
**Sizes available** : 29 cm  
**Packaging** : OPP  
**Quantity in Case** : 100 pairs  
**Case Dimension** : 40 x 60 x 30

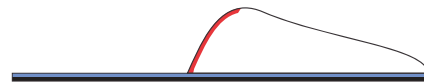
*MOQ 10.000 pairs / Can also be personalized with Logo and requested print details.*



Eva Base



Digital Print



■ Laminated with 65 gr/m<sup>2</sup> nonwoven  
■ Piping  
■ 3 mm Eva



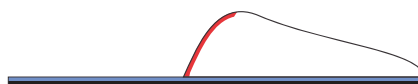
## CODE: ST DJ 033-3 Digital Printed Nonwoven Slipper

**Material** : Digital printed nonwoven 65 gr/m<sup>2</sup>  
**Model** : Closed Toe  
**Toe** : 65 gr/m<sup>2</sup> nonwoven laminated with 2 mm sponge +15 gr/m<sup>2</sup> nonwoven  
**Base** : 65 gr/m<sup>2</sup> nonwoven laminated with 3 mm sponge  
**Eva** : 3 mm  
**Sizes available** : 29 cm  
**Packaging** : OPP  
**Quantity in Case** : 100 pairs  
**Case Dimension** : 40 x 60 x 30

*MOQ 10.000 pairs / Can also be personalized with Logo and requested print details.*



Eva Base



■ Laminated with 65 gr/m<sup>2</sup> nonwoven  
■ Piping  
■ 3 mm Eva



Digital Print



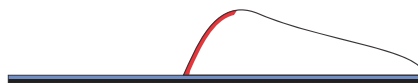
## CODE: ST DJ 033-4 Digital Printed Nonwoven Slipper

**Material** : Digital printed nonwoven 65 gr/m<sup>2</sup>  
**Model** : Closed Toe  
**Toe** : 65 gr/m<sup>2</sup> nonwoven laminated with 2 mm sponge +15 gr/m<sup>2</sup> nonwoven  
**Base** : 65 gr/m<sup>2</sup> nonwoven laminated with 3 mm sponge  
**Eva** : 3 mm  
**Sizes available** : 29 cm  
**Packaging** : OPP  
**Quantity in Case** : 100 pairs  
**Case Dimension** : 40 x 60 x 30

*MOQ 10.000 pairs / Can also be personalized with Logo and requested print details.*



Eva Base



■ Laminated with 65 gr/m<sup>2</sup> nonwoven  
■ Piping  
■ 3 mm Eva



Digital Print



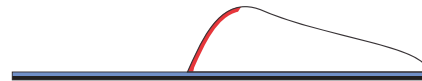
## CODE: ST DJ 033-5 Digital Printed Nonwoven Slipper

**Material** : Digital printed nonwoven 65 gr/m<sup>2</sup>  
**Model** : Closed Toe  
**Toe** : 65 gr/m<sup>2</sup> nonwoven laminated with  
 2 mm sponge +15 gr/m<sup>2</sup> nonwoven  
**Base** : 65 gr/m<sup>2</sup> nonwoven laminated with  
 3 mm sponge  
**Eva** : 3 mm  
**Sizes available** : 29 cm  
**Packaging** : OPP  
**Quantity in Case** : 100 pairs  
**Case Dimension** : 40 x 60 x 30

*MOQ 10.000 pairs / Can also be personalized with Logo and requested print details.*



Eva Base



■ Laminated with 65 gr/m<sup>2</sup> nonwoven  
■ Piping  
■ 3 mm Eva



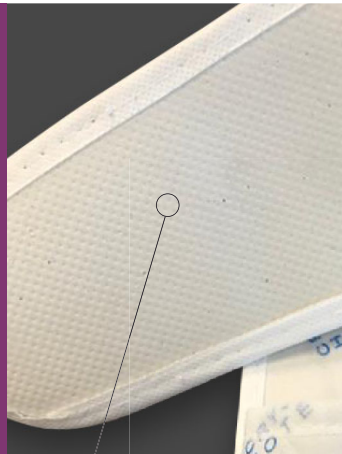
Digital Print



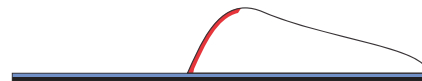
## CODE: ST DJ 033-6 Digital Printed Nonwoven Slipper

**Material** : Digital printed nonwoven 65 gr/m<sup>2</sup>  
**Model** : Closed Toe  
**Toe** : 65 gr/m<sup>2</sup> nonwoven laminated with  
 2 mm sponge +15 gr/m<sup>2</sup> nonwoven  
**Base** : 65 gr/m<sup>2</sup> nonwoven laminated with  
 3 mm sponge  
**Eva** : 3 mm  
**Sizes available** : 29 cm  
**Packaging** : OPP  
**Quantity in Case** : 100 pairs  
**Case Dimension** : 40 x 60 x 30

*MOQ 10.000 pairs / Can also be personalized with Logo and requested print details.*



Eva Base



■ Laminated with 65 gr/m<sup>2</sup> nonwoven  
■ Piping  
■ 3 mm Eva



Digital Print

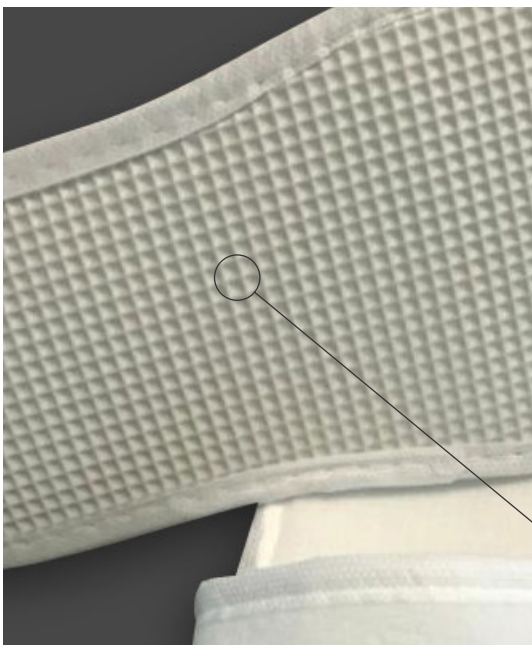


**CHOICES**  
**EVA SOLE & ANTI-SLIP**

# EVA SOLE CHOICES



**EVA WITH  
"SHOCK PATTERN"**



**EVA WITH HARD FINISH**  
*(Obtained from the cover)*



**EVA WITH  
ANTRASIT COLOUR**

# ANTI-SLIP CHOICES



---

01- SPARSE PATTERN DAISY ANTI-SLIP

---

02- DENSE PATTERN DAISY ANTI-SLIP

---

03- TULIP PATTERN ANTI-SLIP

---

04- WHITE DOT PATTERN ANTI-SLIP

---

05- BLACK DOT PATTERN ANTI-SLIP

---

# **PERSONALIZING CHOICES**





**SILK-SCREEN PRINT,  
SINGLE COLOR**



**HOT TRANSFER PRINT**



**EMBROIDERY**  
*Can be revised due to  
the very high number of  
Embroidery Strokes*

# SLIPPER BAGS



**CODE: ÇT SB 1728 Children Slipper Bag**

Used Material : 70 gr/m<sup>2</sup>  
Color : Various colours are available on request  
Sizes : 17 x 28 cm



**CODE: BT SB 1732 Adult Slipper Bag**

Used Material : 70 gr/m<sup>2</sup>  
Color : Various colours are available on request  
Sizes : 17 x 32 cm

# ADDITIONAL NOTES ABOUT PRICES

All unit Prices are confirmed as Ex Factory Antalya and as Euro.

Prices are based on the confirmed specs.

Prices can be revised without any prior notice.

Price confirmation should be requested before orders.

All unit prices are confirmed as plain (without any print and embroidery)

Except for digital printed nonwoven slippers, MOQ for personalizing is 3.000 pairs.

---

Additional cost for recycled or glossy paper cardboard without print

---

Additional cost for one colour Silk Screen Print :

---

Additional cost for Embroidery  
(Can be revised due to the very high number of Embroidery Strokes)

---

Additional cost for Hot Transfer Print

---

Additional cost for each additional 1 mm sponge :

---

Additional cost for each additional 1 mm eva sole :

---

Additional cost for antislip base :

---